

Results of Annual Simulation

| | | |
|-------------------------------------|--------------|-----------------------------|
| Installed Collector Power: | 5.75 kW | |
| Collector Surface Area Irradiation: | 5.94 MWh | 1,088.37 kWh/m ² |
| Energy Produced by Collectors: | 2,508.14 kWh | 459.37 kWh/m ² |
| Energy Produced by Collector Loop: | 2,172.03 kWh | 397.81 kWh/m ² |

| | |
|--------------------------------|-------------|
| DHW Heating Energy Supply: | 3.72 MWh |
| Solar Contribution to DHW: | 2172.03 kWh |
| Energy from Auxiliary Heating: | 2068.81 kWh |

| | |
|--|----------------------------|
| Natural Gas (H) Savings: | 279.3 m³ |
| CO2 Emissions Avoided: | 502.93 kg |
| DHW Solar Fraction: | 51.2 % |
| Fractional Energy Savings (prEN 12976): | 51.8 % |
| System Efficiency: | 36.6 % |

Basic Data

Climate File

| | |
|--------------------------------|------------|
| Location: | DUBLIN |
| Weather Data Record: | "Dublin" |
| Global Radiation Annual Total: | 948.71 kWh |
| Latitude: | 53.43 ° |
| Longitude: | 6.23 ° |

Domestic Hot Water

| | |
|----------------------------|------------------------------|
| Average Daily Consumption: | 250 l |
| Desired Temperature: | 45 °C |
| Load Profile: | Detached House (morning max) |
| Cold Water Temperature: | February:8 °C / August:12 °C |

System Components

Collector Loop


| | |
|----------------------------------|--------------------------|
| Manufacturer: | Ecologics |
| Type: | 30 x 47mm Evacuated Tube |
| Number: | 2.00 |
| Total Gross Surface Area: | 8.22 m ² |
| Total Active Solar Surface Area: | 5.46 m ² |
| Inclination (Tilt Angle): | 40 ° |
| Azimuth: | 0 ° |

Bivalent (Twin Coil) DHW Tank incl. Heating Element (3 kW)


| | |
|---------------|----------------|
| Manufacturer: | T*SOL Database |
| Type: | DHW Tank - 300 |
| Volume: | 300 l |

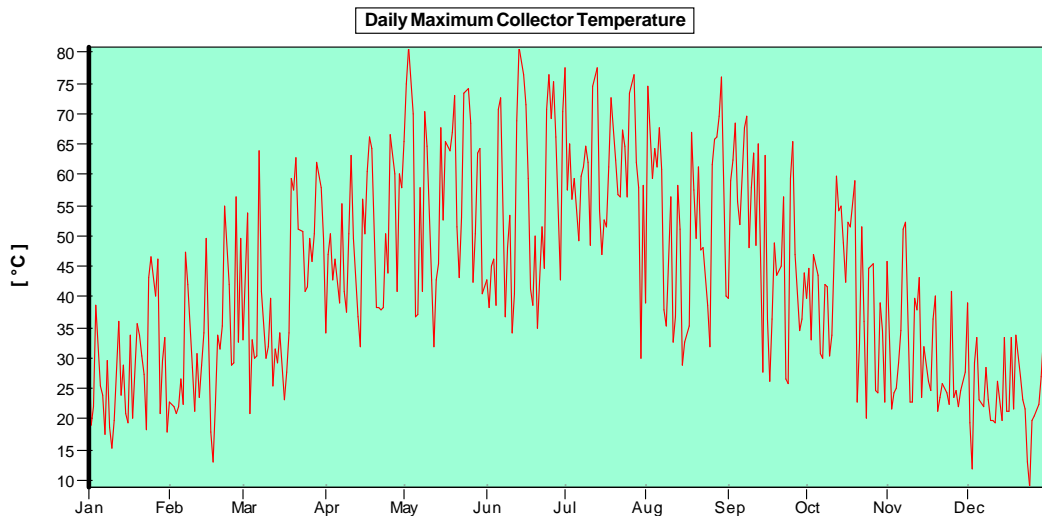
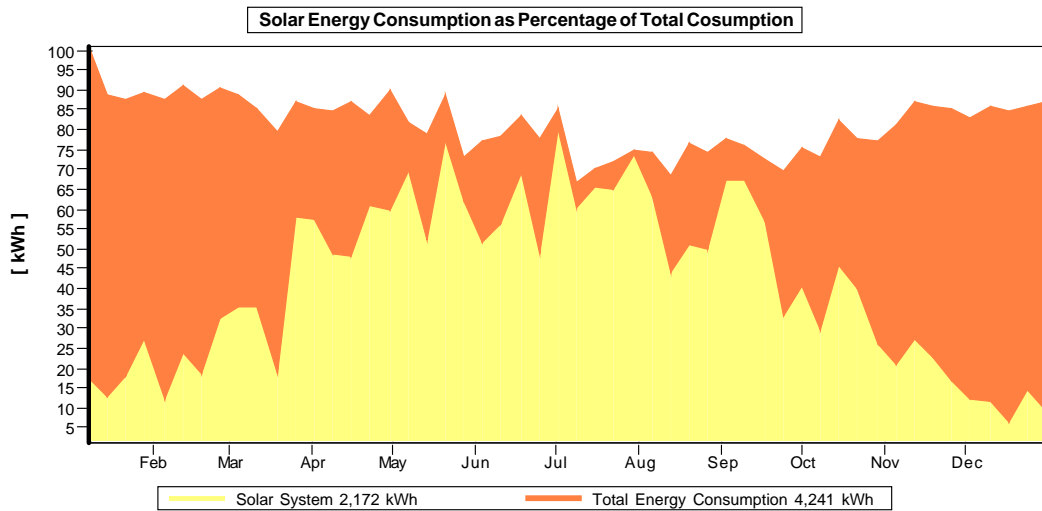
Auxiliary Heating

| | |
|-----------------|---------------------------|
| Manufacturer: | T*SOL Database |
| Type: | Gas Condensing Boiler - 9 |
| Nominal Output: | 9 kW |

 Original T*SOL Database

 With Test Report

 Solar Keymark



These calculations were carried out by T*SOL Pro 4.4 - the Simulation Programme for Solar Thermal Heating Systems. The results are determined by a mathematical model calculation with variable time steps of up to 6 minutes. Actual yields can deviate from these values due to fluctuations in the weather, consumption and other factors. The Schematic System Diagram above does not represent and cannot replace a full technical drawing of the solar system.